

# HKIA Arrivals Report

May 2025

## Executive Summary

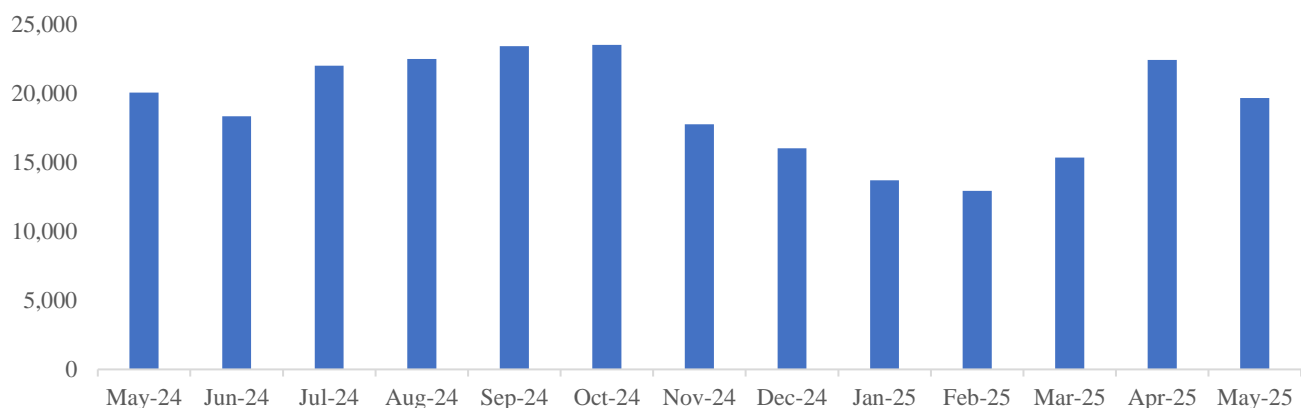
In May 2025, Hosea Kutako International Airport (HKIA) recorded **19,655** international passenger arrivals, reflecting a slight **1.97%** year-on-year decline from May 2024. Compared to April 2025, arrivals decreased by **12.33%**, likely due to the normalisation of travel following the seasonal peak in April. Despite this dip, passenger numbers remain stable, indicating resilient demand for international travel. HKIA maintained its position as Namibia's primary air gateway, handling **85.02%** of total passenger traffic in May, underscoring its dominant role in the country's aviation sector amid ongoing market adjustments.

## Analysis

Hosea Kutako International Airport recorded **19,655** passenger arrivals in May 2025, reflecting a **1.97%** year-on-year decline from the **20,050** arrivals reported in May 2024. On a month-on-month basis, international arrivals at HKIA fell by **12.33%** compared to April 2025. This decrease could be linked to the normalization of travel volumes following the seasonal spike experienced in April. Despite the decline, the May 2025 figure remains relatively stable, indicating a more resilient baseline demand for international travel compared to previous months in early 2025.

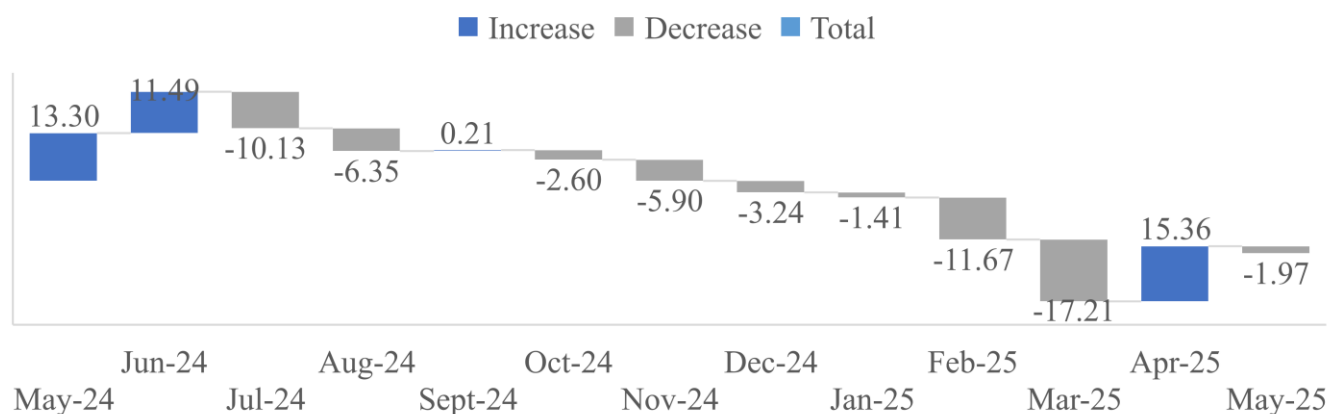
At a national level, HKIA remained the country's primary gateway for passenger arrivals in May 2025, accounting for **85.02%** of total passenger movements, including both domestic and international traffic. The remaining share was distributed among Eros Airport (**10.33%**), Walvis Bay Airport (**7.57%**), Andimba Toivo Ya Toivo Airport (**1.89%**), and Lüderitz Airport (**0.53%**), highlighting HKIA's continued dominance in Namibia's air passenger market.

Figure 1: HKIA Monthly Arrivals,  
May 2024 - May 2025



Source: NAC, HEI Research

Figure 2: HKIA Year on Year Growth Rates,  
May 2024 - May 2025



Source: NAC, HEI Research

This modest contraction comes after a strong rebound in April 2025 and may reflect a natural market adjustment following the significant seasonal uptick in the previous month. While the decline is relatively marginal, it signals the need to monitor international travel trends closely, especially as the sector stabilizes following recent policy changes such as the implementation of the Visa-on-Arrival and E-visa systems.

## Outlook/Sentiment

While year-on-year comparisons for June 2025 may register within a modest growth or slight contraction range, depending on external market conditions and regional travel patterns, the outlook remains cautiously optimistic. The resilience demonstrated in May's figures, despite a slowdown, indicates that international travel demand through HKIA is gradually stabilising.

Nationally, HKIA is expected to maintain its position as the country's leading passenger gateway, continuing to account for the bulk of both domestic and international passenger movements. Overall, while no significant spikes are anticipated, consistent arrival levels and sustained policy-driven travel facilitation measures should keep activity relatively steady in June.