

# NSX REPORT

Wednesday, August 14, 2024



## LOCAL INDICES

	Level	Net Change	Chg%
JSE All	80956.20	395.40	0.49%
NSX Overall	1761.78	0.97	0.06%
NSX Local	681.04	0.82	0.12%

## GLOBAL INDICES

	Level	Chg%
Dow Jones	39781.88	0..03%
S&P 500	5434.43	1.68%
NASDAQ	17787.61	2.43%
FTSE100	8235.23	1.04%
DAX	17812.05	0.48%
Hang Seng	17812.05	-0.46%
Nikkei	36442.43	0.58%

## CURRENCIES

	Level	Chg%
N\$/US\$	18.07	-0.39%
N\$/£	19.87	-0.46%
N\$/€	23.18	-0.71%
N\$/AUD\$	11.98	-0.51%
N\$/CAD\$	13.17	-0.47%
US\$/€	1.28	-0.30%
¥/US\$	147	0.02%

## COMMODITIES

	Level	Chg%
Brent Crude	81.21	0.65%
Gold	2461.41	-0.15%
Platinum	934.99	-0.68%
Copper	8913.97	0.93%
Silver	27.78	-0.21%
Palladium	944.75	0.25%
Uranium	81.50	0.12%

## NSX UPDATE

Yesterday, the NSX Overall Market increased by 0.06%, rising from 1,760.81 points to 1,761.78 points. The Local Index went up by 0.12% to 681.04 points. Telecommunications and Utilities remained unchanged at 0.00%, while Financials increased by 1.00%. Real Estate decreased by 0.66% to 12.17 points, Consumer Staples rose by 0.71%, and Consumer Discretionary was up by 0.34%. However, Basic Materials fell by 1.57%. Capricorn Group Limited (formerly Capricorn Investment Group Ltd) traded 24,000 shares on the Local Market.

## JSE UPDATE

The JSE All Share Index rose by 0.49% to 80,956.2 points. The Precious Metals and Mining sector was the top performer, with an increase of 1.91%. The Top 40 Index climbed by 0.53% to 74,033 points. The top three performers for the previous day were:

ALPHAMIN: Up by 8.05%.

DRDGOLD: Up by 4.74%.

SANTAM: Up by 4.73%.

SIBANYE-S traded the highest volume of shares, with 13 million shares exchanged.

## GLOBAL UPDATE

Hong Kong's stock market ended higher Tuesday with the benchmark Hang Seng Index up 0.36 percent to close 17,174.06 points. News.az reports.

The Hang Seng China Enterprises Index rose 0.33 percent to end at 6,049.41 points, and the Hang Seng Tech Index closed flat at 3,429.69 points.

Japan's Nikkei share average surged as traders returned after a public holiday and the Nikkei jumped 3.45%, or 1,207.51 points, to close at 36,232.51, while the broader Topix was ahead 2.83%, or 70.25 points, to 2,553.55.

# EQUITIES

## LOCAL INDEX

Ticker	No Shares	Price	Change	Chg%
NBS	4527	29.50	-	0.00%
NHL	-	2.22	-	0.00%
CGP	24000	19.50	0.04	0.21%
FNB	-	46.45	-	0.00%
SNO	6300	8.85	0.04	0.45%
LHN	1943	4.66	0.09	1.97%
NAM	-	0.72	-	0.00%
SILP	-	128.01	-	0.00%
ORY	-	12.02	-	0.00%
MOC	-	7.61	-	0.00%
PNH	-	12.70	-	0.00%
ANE	-	8.99	-	0.00%

## OVER THE COUNTER

Ticket	No Shares	Price	Change	Chg%
AGR	-	3.66	-	0.00%

## DUAL LISTED STOCKS

Ticket	No Shares	Price	Change	Chg%
ANM	257	515.99	-6.01	-1.15%
PDN	-	121.43	-0.41	-0.34%
B2G	-	47.17	-2.83	-5.66%
OCG	-	70.5	-0.05	-0.07%
SRH	-	292.09	2.22	0.77%
TRW	-	88.89	0.3	0.34%
FST	-	80.26	0.71	0.89%
NBK	-	286.45	5.18	1.84%
SNB	-	217	0.85	0.39%
IVD	-	135.15	0.54	0.40%
SNM	-	336.5	15.19	4.73%
MMT	-	26.11	0.04	0.15%
OMM	-	11.89	0.15	1.28%
SLA	-	80.41	1.46	1.85%
KFS	-	16.3	0	0.00%
TAD	-	16.55	-0.02	-0.12%
TUC	-	0.34	-0.03	-8.11%
VKN	-	16.51	-0.12	-0.72%

## EXCHANGE TRADED FUNDS

Ticket	No Shares	Price	Change	Chg%
ENXPLD	-	163.64	2.26	1.40%
ENXGLD	-	434.59	1.11	0.26%
ENXPLT	-	163.26	-1.97	-1.19%
SXNNAM	-	22.48	0	0.00%
NGNGLD	3127	415.92	1.27	0.31%
NGNPLD	-	163.09	1.14	0.70%
NGNPLT	1223	162.6	-1.63	-0.99%
SXNEMG	-	60.94	-0.1	-0.16%
SXNWDM	-	91.12	0.81	0.90%
SXNNDQ	-	194.6	1.94	1.01%
SXN500	-	102.97	0.42	0.41%

## EXCHANGE TRADED NOTES

Ticket	No Shares	Price	Change	Chg%
ALETCN	-	21.59	-0.16	-0.74%
AMETCN	-	10.71	0.02	0.19%
APETCN	-	19.32	0.15	0.78%
BHETCN	-	23.13	-0.14	-0.60%
FAETCN	-	19.34	0.23	1.20%
MSETCN	-	20.56	0.19	0.93%
MWETCN	-	16.04	0.05	0.31%
NFETCN	-	12.94	0.05	0.39%
TSETCN	-	15.43	0.66	4.47%
SRETCN	-	13.8	0.09	0.66%

## DevX & OTC

Ticket	No Shares	Price	Change	Chg%
ATM	-	0.83	0.06	7.79%
BMN	-	29.85	-0.04	-0.13%
CER	-	0.14	-	0.00%
DYL	-	11.79	-0.02	-0.17%
FSY	-	6.58	0.38	6.13%
EL8	-	3.61	0.05	1.40%
OSN	-	24.44	0.05	0.21%

# NEWS

## LOCAL NEWS

### Politicians, business people exempted from land tax

The Government Gazette has published the names of over 500 agricultural land owners who are exempt from paying land tax. This includes opposition leader McHenry Venaani, deputy judge president Petrus Damaseb and the Roman Catholic Church. Another beneficiary of the exemption is Sonja Thieme, the sister of business mogul Sven Thieme. The exemptions are given by the agriculture, water and land reform minister Calle Schlettwein, who is empowered by the law. "Exemption of certain owners of agricultural land from land tax imposed in terms of section 76 of the Agricultural (Commercial) Land Reform Act, 1995," notes the Government Gazette. The list, which was gazetted last Tuesday, consists of 11 churches, five late estates and 566 individuals, including politicians, judges and chief executives, among others.

### Govt to pay N\$300 000 over boy's loss of arm

The mother of a boy whose left arm was amputated in 2019 when he was six years old will be paid N\$300 000. This is the result of a medical negligence claim filed against the government. The settlement agreement between the mother of the boy, the government and the minister of health and social services was made an order of the High Court last week. In terms of the order, the government and health minister agreed to pay the mother an amount of N\$100 000 for her son's pain and suffering and N\$200 000 for his loss of physical abilities due to the amputation of his left arm. It was also agreed that the state will provide the boy with the artificial body parts he may need in future due to the loss of his arm. In the claim filed by the boy's mother in May last year, the court was informed that the boy's left arm was fractured when he fell while playing at a school at Maltahöhe on 7 October 2019.

### Critical minerals discovered in the Zambezi region

Zambezi governor Lawrence Sampofu says investors should come on board to support the extensive drilling process to quantify 15 critical minerals discovered in the region. Preliminary exploration done by Zita Dias Diamond Resources has found aluminum, silicone, phosphorus, sulfur, chloride, potassium, calcium, titanium, vanadium, chromium, manganese, iron, cobalt, copper and tantalum.

## AFRICA NEWS

### In Nigeria, anti-government protests unite a divided country

Since religious riots tore across the central Nigerian city of Jos two decades ago, its Muslim and Christian residents have largely kept apart. They have their own neighborhoods. They vote for different political parties. But the cost-of-living crisis that has swept Nigeria over the past year has blurred some of those boundaries. "If there is hunger in the land, the hunger that the Christian is feeling is not different from the hunger the Muslim is feeling," observes Tony Young Godswill, national secretary of the Initiative for a Better and Brighter Nigeria, a pro-democracy group. So when nationwide anti-government protests broke out in early August, hungry, angry Jos residents from all backgrounds poured into the streets. And the momentum of the demonstrations soon barreled across old fault lines. When Muslim demonstrators knelt to pray on a busy road one Friday afternoon, hundreds of Christian marchers spontaneously formed a tight, protective circle around them.

### Africa CDC declares mpox a public health emergency

The African Union's health authority on Tuesday declared a public health emergency over an outbreak of mpox whose spread has been on the rise since July. In an online briefing on Tuesday, the head of the Africa Centres for Disease Control and Prevention Jean Kaseya called for aggressive efforts to tackle the outbreak. According to CDC data as of August 4, there had been 38,465 cases of mpox and 1,456 deaths in Africa since January 2022. The outbreak has swept through several African countries, particularly the Democratic Republic of Congo (DRC). Nearly all east and central African countries have now confirmed cases. Mpox is transmitted through close contact. It causes rashes, flu-like symptoms and pus-filled wounds. Although most cases are mild, there have been confirmed fatalities. The World Health Organization said Tuesday said that its own emergency committee will sit on Wednesday to discuss whether a Public Health Emergency of International Concern (PHEIC) should be declared.

## INTERNATIONAL NEWS

### Putin reaffirms support for Palestinian State

Russian President Vladimir Putin received Palestinian Authority President Mahmoud Abbas in Moscow on Tuesday, emphasizing Russia's backing for the formation of a Palestinian state. Their dialogue addressed various topics, including bilateral relations, the Middle Eastern landscape, and the conflict in Gaza. Putin stated, "Today, Russia is compelled to safeguard its interests and protect its citizens with military force. The events occurring in the Middle East, particularly in Palestine, certainly do not escape our attention. We have enduring and profound connections with the Arab world, especially with Palestine, which we hold in high regard. Naturally, we are observing with significant concern and sorrow the humanitarian crisis that has emerged in Palestine." He asserted that Russia's perspective on the requirement for a peaceful settlement with Israel continues to be unchanged.

### South Africa's unemployment rate climbs, over 8 million jobless

South Africa's unemployment rate increased by 0.6 percentage points from 32.9% in Q1 2024 to 33.5% in Q2 2024, the government's statistics office reported Tuesday. Africa's most industrialized economy has struggled to create jobs in recent years due to a long recession and most recently the Covid-19 pandemic. About 8.4 million people were out of work, up from 5.2 million in 2014. The number of employed persons fell by 92,000 to 16.7 million in Q2 2024. The sectors which saw the most job decreases include trade, agriculture and construction. Only manufacturing, social services and utilities added jobs.

# FIXED INCOME DAILY REPORT

## FIXED INCOME COMMENTARY

On Wednesday, August 7, the Bank of Namibia (BoN) conducted an auction. For the N\$395.0 million up for grabs, 184 bids totaling N\$1.03 billion were made. The bid-to-offer ratio for the Government Bonds (GC) was 2.67x, whilst the Inflation-linked Bonds (GI) displayed a strong ratio of 3.40x. With the exception of the GC32, every bond was oversubscribed. Bids for the GC28 and GC37 exceeded N\$145.0 million each. The central bank allocated the GC32 little, and the GC27, GC28, and GC48 somewhat overall.

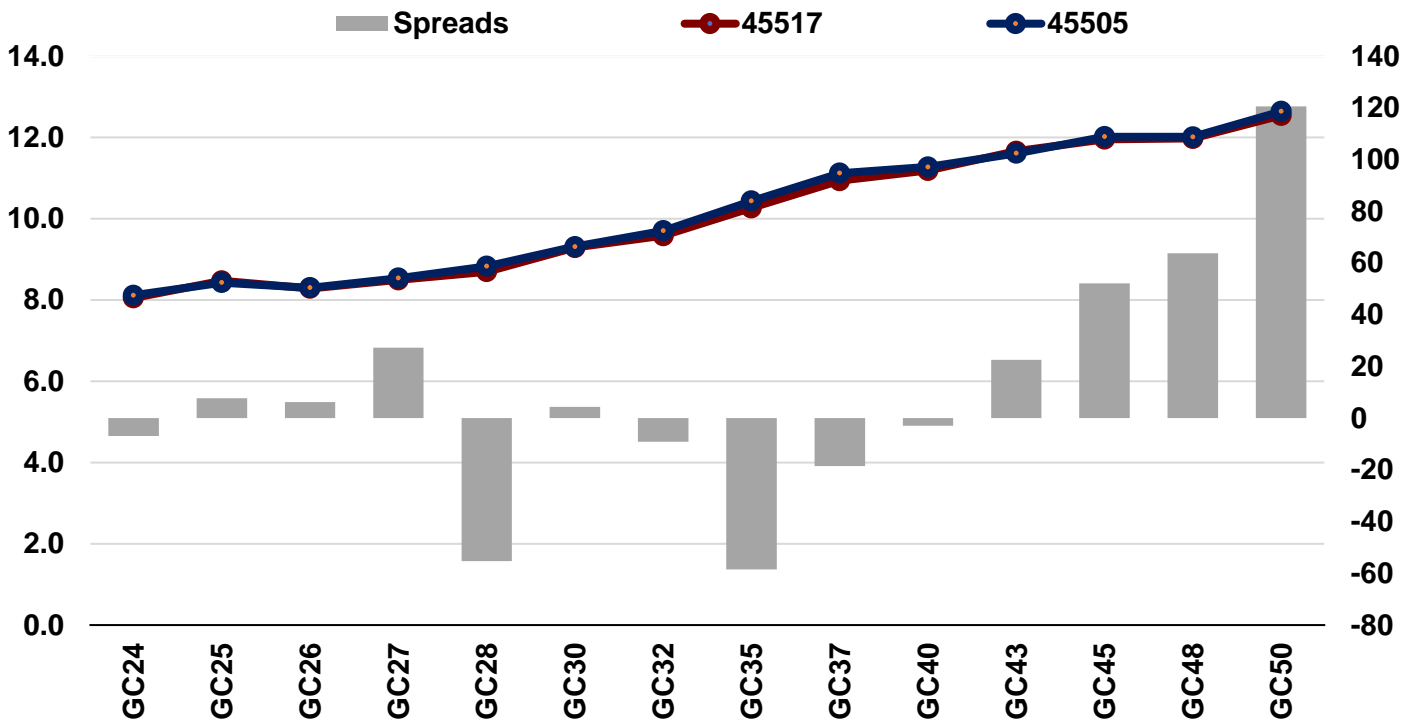
## Government Bonds

Next Auction Date: 14 August 2024

### GOVERNMENT BONDS

Bond	YTM	Benchmark YTM %	Benchmark	Spread(bps)	All-In-Price	Coupon	Maturity
GC24	8.05	8.12	R2023	-1	100.37	10.5	45580
GC25	8.47	8.39	R186	-2	100.00	8.5	45762
GC26	8.29	8.22	186	0	100.31	8.5	46127
GC27	8.50	8.22	R186	-4	98.92	8	46402
GC28	8.69	9.25	R2030	-6	99.31	8.5	47041
GC30	9.29	9.25	R2030	-6	94.58	8	47498
GC32	9.58	9.67	R213	-5	96.86	9	48319
GC35	10.27	10.85	R209	-6	95.02	9.5	49505
GC37	10.94	11.12	R2037	-6	90.17	9.5	50236
GC40	11.19	11.22	R214	-6	89.68	9.8	51424
GC43	11.66	11.43	R2044	-4	87.41	10	52427
GC45	11.96	11.43	R2044	-6	83.91	9.85	53158
GC48	11.97	11.34	R2048	-3	84.94	10	54346
GC50	12.54	11.34	R2048	-5	82.48	10.25	54984
GI25	3.68	-	-	0	100.11	3.8	45853
GI27	4.47	-	-	0	98.62	4	46675
GI29	4.79	4.59	-	0	98.86	4.5	47133
GI33	5.41	4.90	-	0	93.74	4.5	48684
GI36	5.79	4.95	-	0	97.53	4.8	49871
NAM04	9.64	8.22	-	-8	-	10.51	46235

### NAMIBIAN SOVEREIGN YIELD CURVE-13 August 2024



Source: Bank of Namibia