

Fixed Income Daily Report

Thursday , 8 February 2024



Fixed Income Commentary

Secondary trades were reported to NSX yesterday from the GC26.

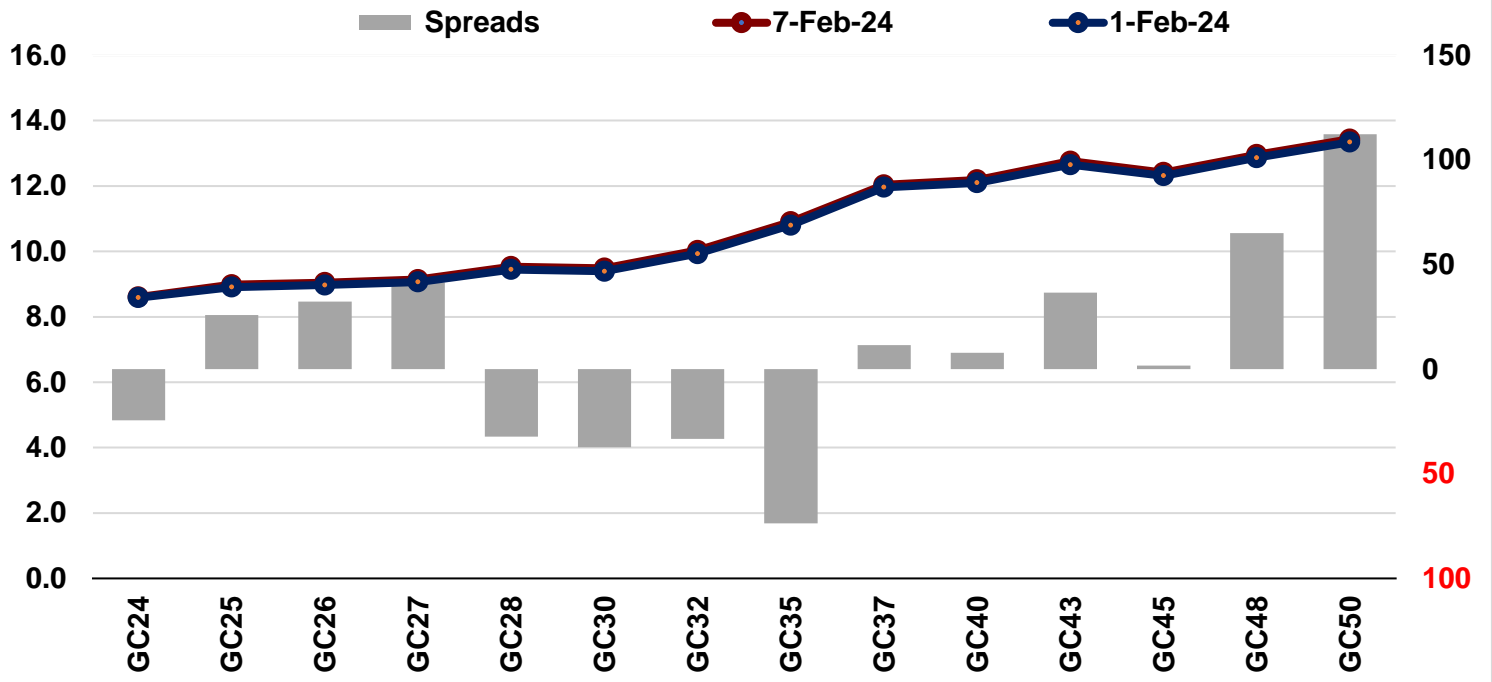
Government Bonds

Next Auction Date: 14 Feb. 2024

Bond	YTM	Benchmark YTM	Benchmark	Spread (bps)	All-In-Price	Coupon Rate	Next Coupon
GC24	8.60	8.85	GT364/13Oct23	-	101.21	10.5	15-Oct-2024
GC25	8.98	8.72	R186	33	99.45	8.5	15-Apr-2025
GC26	9.04	8.72	R186	37	98.92	8.5	15-Apr-2026
GC27	9.14	8.72	R186	35	97.12	8	15-Jan-2027
GC28	9.54	9.86	R2030	-39	96.14	8.5	15-Oct-2028
GC30	9.48	9.86	R2030	-45	93.37	8	15-Jan-2030
GC32	10.03	10.36	R213	-29	94.31	9	15-Apr-2032
GC35	10.90	11.64	R209	-74	90.94	9.5	15-Jul-2035
GC37	12.03	11.92	R2037	23	83.32	9.5	15-Jul-2037
GC40	12.19	12.11	R214	22	83.10	9.8	15-Oct-2040
GC43	12.76	12.39	R2044	29	80.32	10	15-Jul-2043
GC45	12.41	12.39	R2044	-	80.92	9.85	15-Jul-2045
GC48	12.96	12.31	R2048	60	78.69	10	15-Oct-2048
GC50	13.43	12.31	R2048	41	77.05	10.25	15-Jul-2050
GI25	3.54	-	-	-	100.36	3.8	15-Jul-2025
GI27	4.50	-	-	-	98.31	4	15-Oct-2027
GI29	5.05	4.39	-	-	97.63	4.5	15-Jan-2029
GI33	5.68	4.80	-	-	91.63	4.5	15-Apr-2033
GI36	5.97	5.00	-	-	95.89	4.8	15-Jul-2036

Source: Bank of Namibia

Namibian Sovereign Yield curve-7 Feb. 2024



Source : Bank of Namibia

TEAM



Monika Kristof	Senior Economist	monika@hei.com.na
Asnath Tjozongoro	Equity Research Analyst	asnath@hei.com.na
HEI office		info@hei.com.na



15 Garten Street | Ausspannplatz | Windhoek

P.O Box 24867 | Windhoek

+264 61 307 728

info@hei.com.na

www.hei.com.na



