



## Daily Fixed Income Report (12 May 2023)

### HEI Fixed Income Market Commentary

- On Friday, the South African rand weakened against the US dollar. In the US, the Michigan consumer sentiment index dropped to a six-month low in May.

- The data presented in Table 2 indicates that there was a slight increase in the yield of short-dated government bonds, specifically the GC2026, rising from 9.63% to 9.65%. Conversely, the yield of the GC2048 bond showed a marginal decrease, moving from 14.00% to 13.95%.
- Table 1 exhibited a slight decline in fixed-term deposit rates

Table 1. Fixed Term Deposits

Term	11-May-23	12-May-23
<b>1 Month</b>	7.57	7.57
<b>2 Months</b>	7.65	7.65
<b>3 Months</b>	7.74	7.74
<b>4 Months</b>	7.85	7.84
<b>5 Months</b>	7.91	7.90
<b>6 Months</b>	8.26	8.25
<b>7 Months</b>	8.35	8.35
<b>8 Months</b>	8.46	8.46
<b>9 Months</b>	8.54	8.53
<b>10 Months</b>	8.58	8.56
<b>11 Months</b>	8.67	8.66
<b>12 Months</b>	8.73	8.73

Source: BoN & HEI Research

Table 2. Namibia Government Bonds

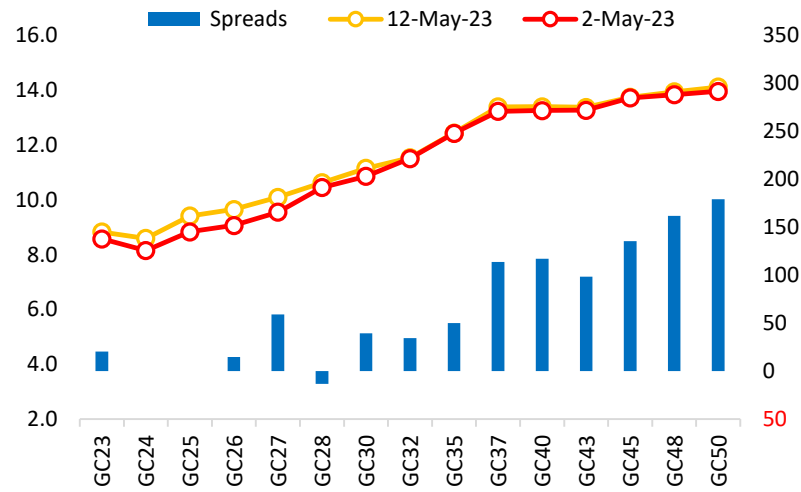
Bonds	Coupon	Maturity	YTM (%)	YTM (%)	YTM (%)	DTDA	Prices
			2-May-23	11-May-23	12-May-23	(bps)	12-May-23
GC23	8.85	15-Oct-23	8.58	8.82	8.83	1.52	99.98
GC24	10.5	15-Oct-24	8.15	8.57	8.60	2.10	102.49
GC25	8.5	15-Apr-25	8.83	9.43	9.41	-1.80	98.41
GC26	8.5	15-Apr-26	9.07	9.63	9.65	2.10	97.11
GC27	8	15-Jan-27	9.55	10.08	10.10	2.00	93.66
GC28	8.5	15-Oct-28	10.46	10.59	10.63	3.91	91.37
GC30	8	15-Jan-30	10.86	11.14	11.15	1.10	85.39
GC32	9	15-Apr-32	11.51	11.54	11.54	0.30	86.05
GC35	9.5	15-Jul-35	12.43	12.47	12.45	-1.84	81.73
GC37	9.5	15-Jul-37	13.24	13.42	13.40	-1.50	75.49
GC40	9.8	15-Oct-40	13.26	13.45	13.40	-4.34	75.90
GC43	10	15-Jul-43	13.28	13.44	13.38	-5.63	76.55
GC45	9.85	15-Jul-45	13.73	13.81	13.75	-5.63	73.09
GC48	10	15-Oct-48	13.84	14.00	13.95	-5.45	73.07
GC50	10.25	15-Jul-50	13.97	14.12	14.12	0.78	73.20

Source: BoN & HEI Research

**Important disclosure:**

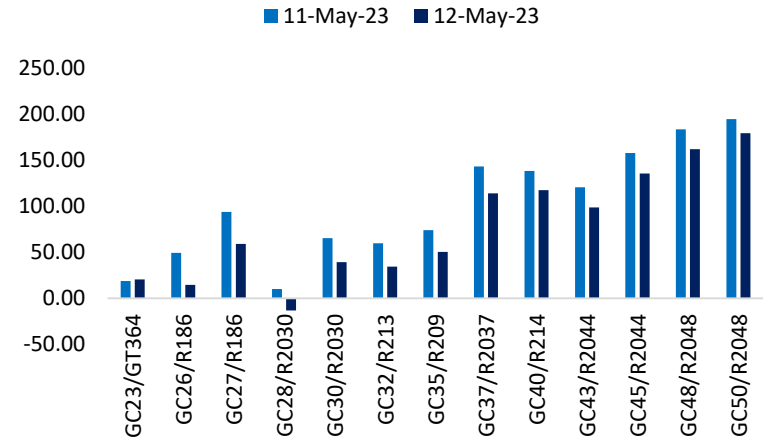
Readers should be aware that the opinions, estimates, and projections expressed in this report are based on current market conditions, publicly available information, and our analysis, and may change without notice. This report is not intended to be the sole basis for any investment decision, and investors should consult with their financial advisor or do their own research before making any investment decisions.

Figure 1. Namibia Bond Yield: 2-May-2023 vs. 12-May-2023



Source: BoN & HEI Research

Figure 2. Namibia vs. South Africa Bond Spreads: 11-May-2023 vs. 12-May-2023



Source: BoN & HEI Research

**Important disclosure:**

Readers should be aware that the opinions, estimates, and projections expressed in this report are based on current market conditions, publicly available information, and our analysis, and may change without notice. This report is not intended to be the sole basis for any investment decision, and investors should consult with their financial advisor or do their own research before making any investment decisions.